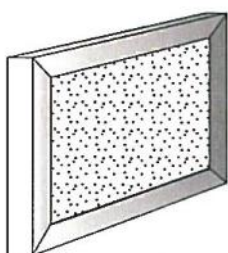


## INSTALLATION INSTRUCTIONS

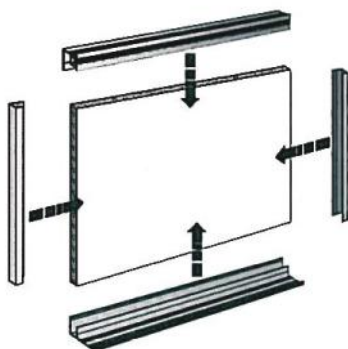
### A ) BEGIN BY MARKING THE EXACT POSITION OF THE BOARD ON WALL

### B ) FACTORY ASSEMBLED BOARD



Usually units up to 12' in length are factory assembled and shipped complete, ready for hanging.

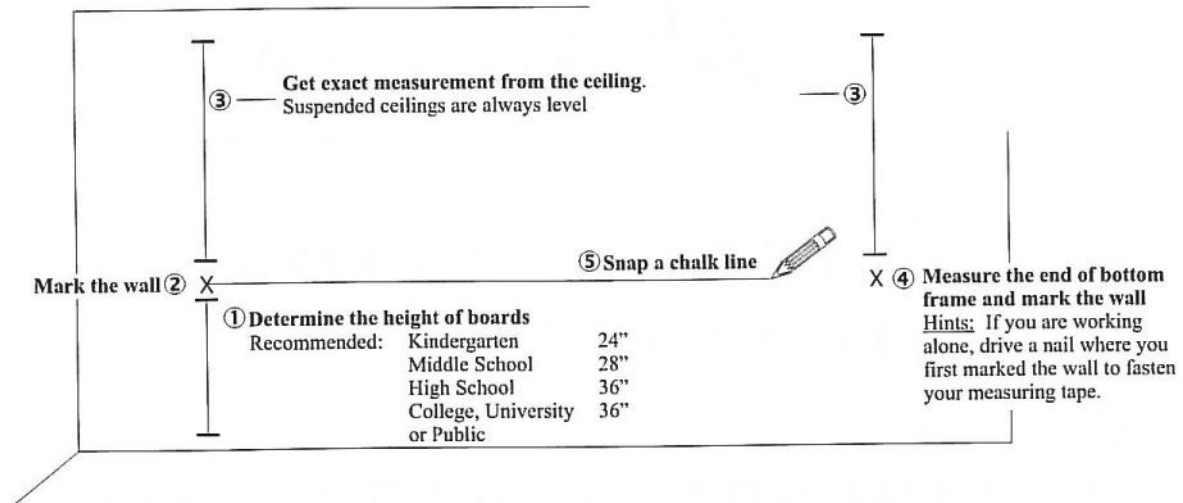
### C ) READY TO ASSEMBLE KIT FORM BOARD



We may consider whether there are sufficient reasons (site access, packaging weight and configurations, transport restrictions etc.) to have the boards shipped in a ready to assemble kit form.

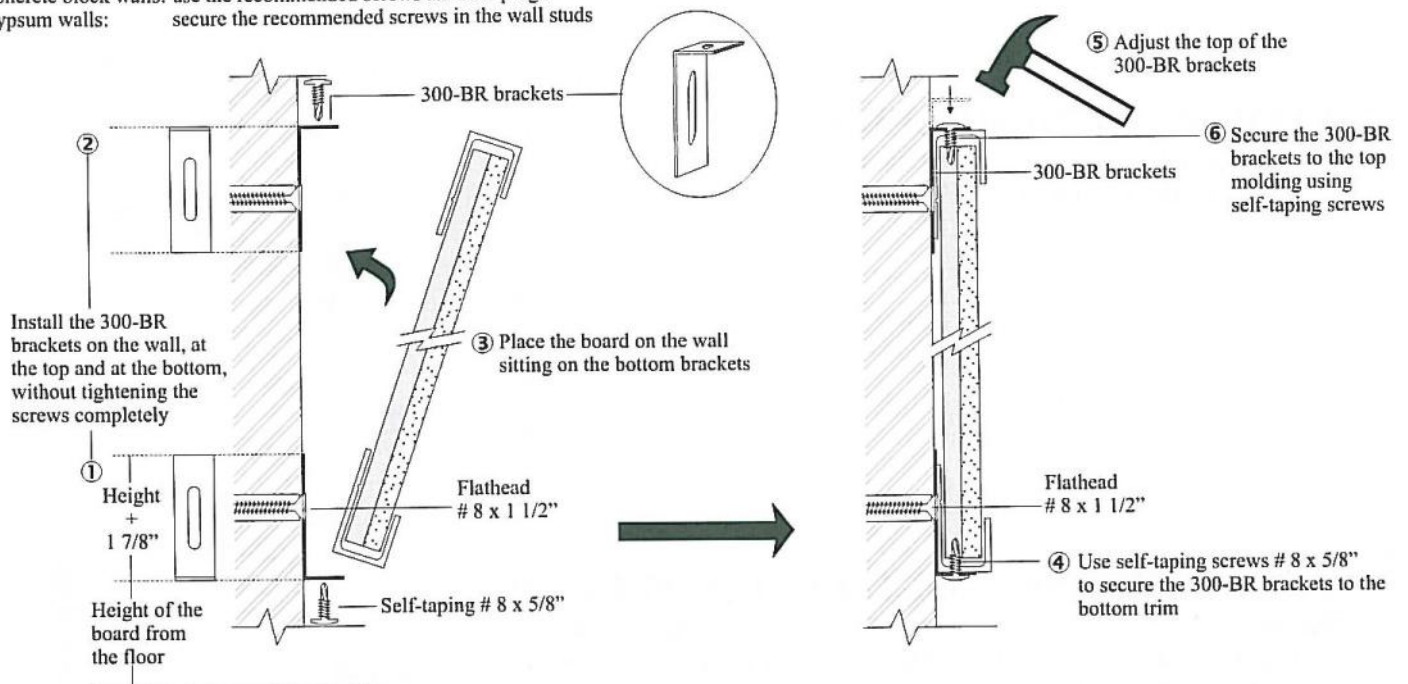
### D ) FASTENING METHODS FOR EACH TYPE OF PROFILES

## A ) BEGIN BY MARKING THE EXACT POSITION OF BOARD ON WALL

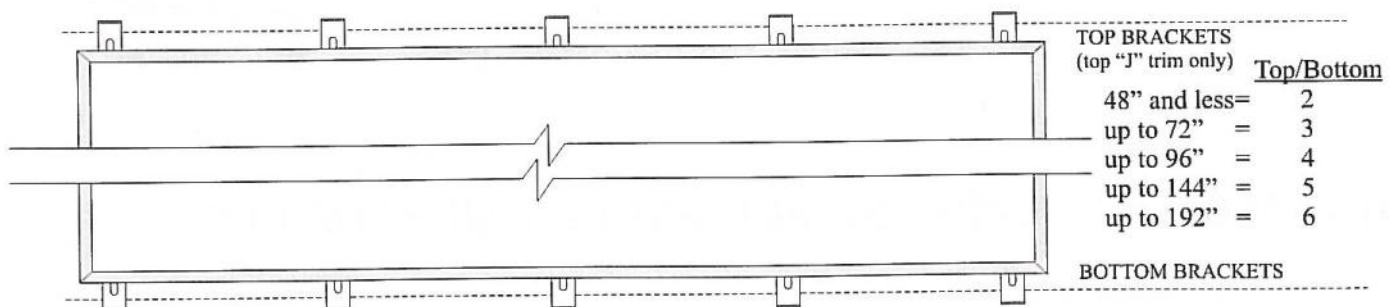


## B ) FACTORY ASSEMBLED BOARD

Concrete block walls: use the recommended screws and raw plugs  
Gypsum walls: secure the recommended screws in the wall studs



### How many brackets to use?

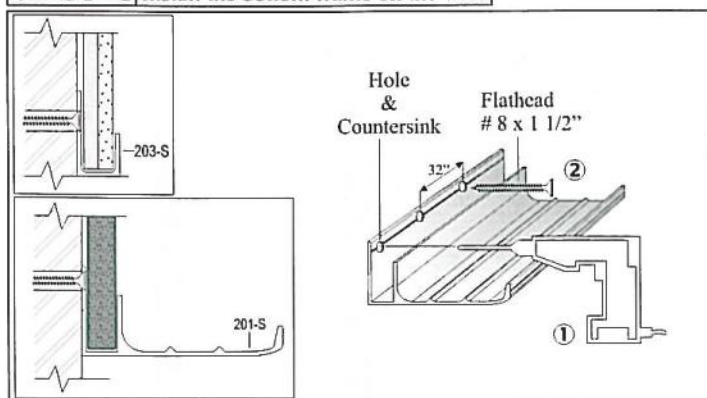


## C ) READY TO ASSEMBLE KIT FORM BOARD

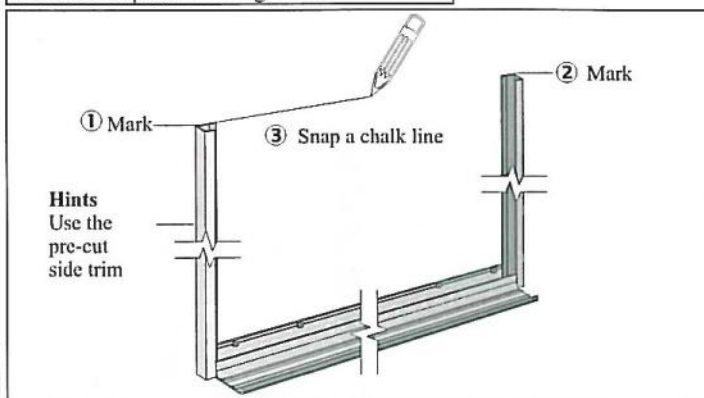
Concrete block walls : use the recommended screws and raw plug

Gypsum walls : secure the recommended screws in the wall studs

### STEP 1 Install the bottom frame on the wall

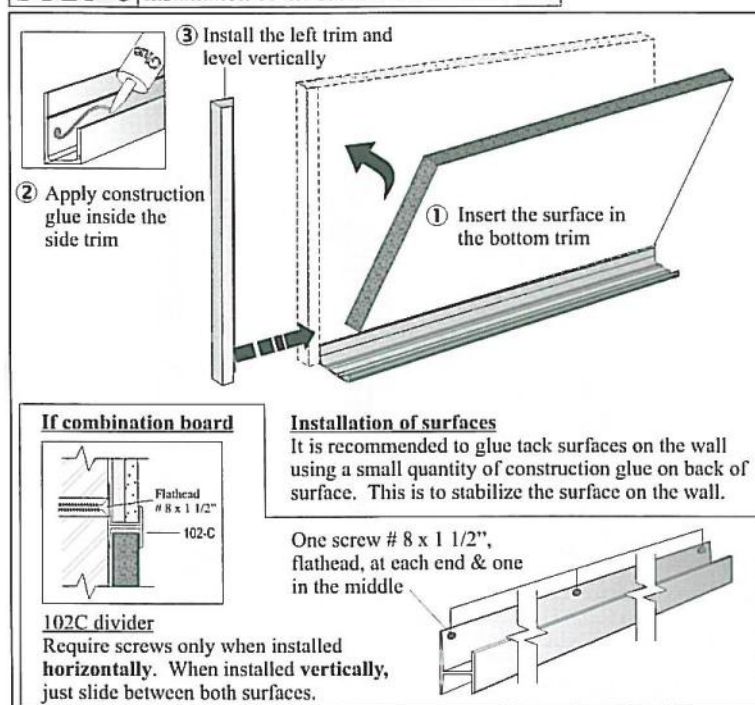


### STEP 2 Find the height of board on wall

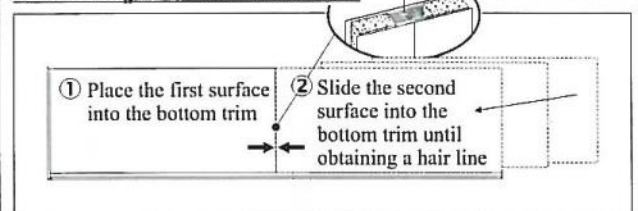


**Hints**  
Use the pre-cut side trim

### STEP 3 Installation of the surface & the LEFT trim

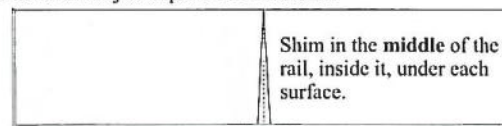


#### If the writing surface is in two sections

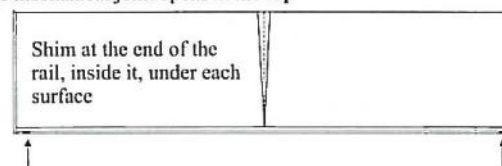


#### Hints: How to fine tune the hair line joint

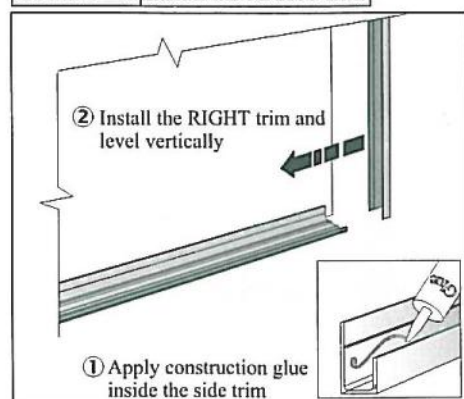
If the mechanical joint opens at the bottom:



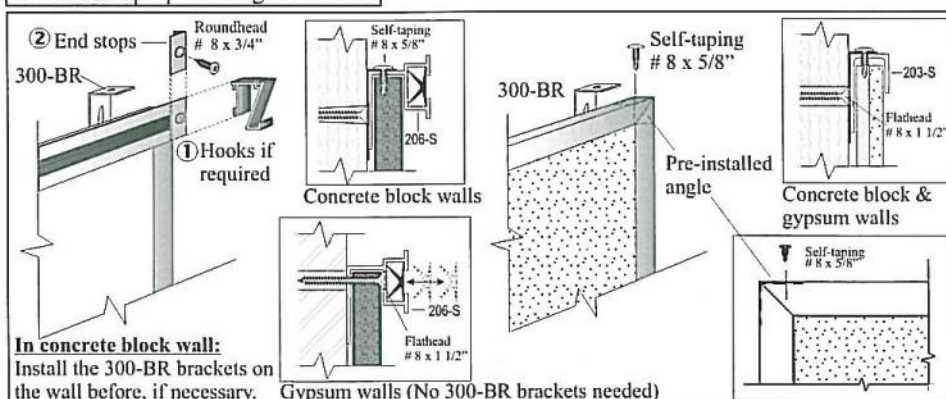
If the mechanical joint opens at the top



### STEP 4 Install the RIGHT trim

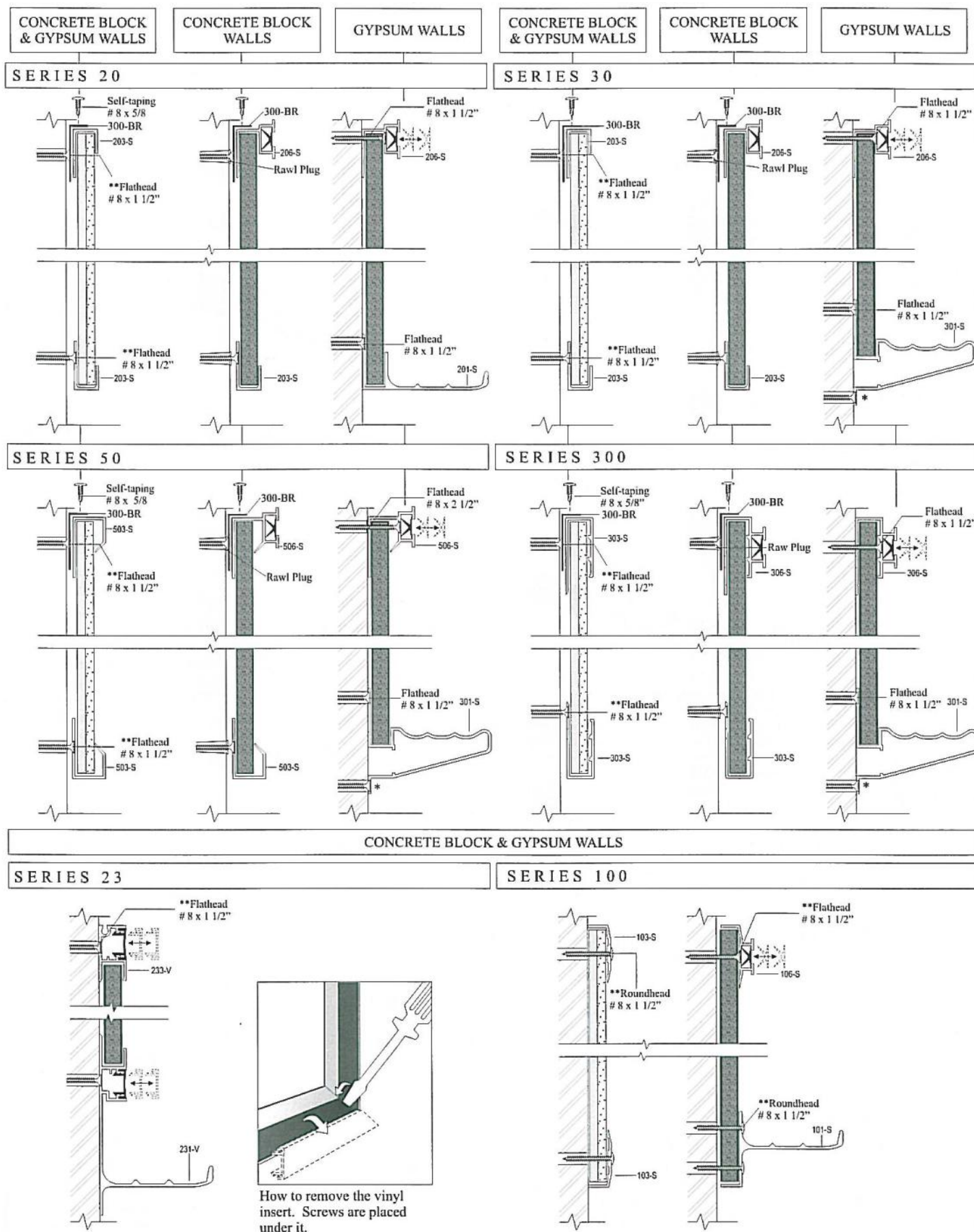


### STEP 5 Top molding installation





## D ) FASTENING METHODS FOR EACH TYPE OF PROFILES



- \* Needed only when board is factory assembled
- \*\* Rawl plug is required if the board is installed on a concrete bloc wall

If you encounter any difficulties installing your board or for any additional information, see our video on web site.